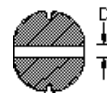
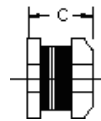
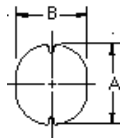


HPC0504 TYPE

TYPE

DIMENSION

HPC 0504: 10 μ H ~ 220 μ H



A : 5.8 \pm 0.3
B : 5.2 \pm 0.3
C : 4.5 \pm 0.35
D : 1.3 REF

SPECIFICATION

ITEM	L	DCR	IDC
HPC0504	(μ H)	MAX. (Ω)	MAX. (A)
100M	10 \pm 20%	0.10	1.44
120M	12 \pm 20%	0.12	1.40
150M	15 \pm 20%	0.14	1.30
180M	18 \pm 20%	0.15	1.23
220M	22 \pm 20%	0.18	1.10
270M	27 \pm 20%	0.20	0.97
330L	33 \pm 15%	0.23	0.88
390L	39 \pm 15%	0.32	0.80
470L	47 \pm 15%	0.37	0.72
560K	56 \pm 10%	0.42	0.68
680K	68 \pm 10%	0.46	0.61
820K	82 \pm 10%	0.60	0.58
101K	100 \pm 10%	0.70	0.52
121K	120 \pm 10%	0.93	0.48
151K	150 \pm 10%	1.10	0.40
181K	180 \pm 10%	1.38	0.38
221K	220 \pm 10%	1.57	0.35

K: \pm 10% M: \pm 20% L: \pm 15%

* Hong can design any part to your requirements with different inductance.

* All parameters as this content presented are subject to final specifications both sides confirmed.